

PULSE ISOLATOR

PPTP2 -

Use

Insulates and outputs an input pulse signal by a 2-output relay contact or an open collector.

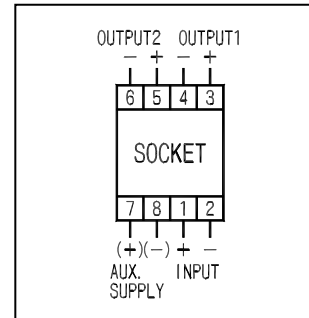
Features

1. Withstand voltage between input, 1st output, 2nd output and power source is AC2, 000V (50/60Hz), complete insulation for 1 minute.
2. Impulse withstands voltage 5kV, 1.2/50µs (between electric circuit and outer case), and positive/negative polarity 3 times each is guaranteed.
3. Product with output by an open collector or a relay contact is manufacturable.

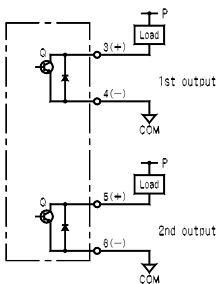
Specification

Input	Mark	Output	Mark	Auxiliary supply	
No-voltage input Input conducting wire resistance 3k	2	Open connector output DC24V, 100mA	1	AC100V(-15%, +10%), 50/60Hz	
			2	AC110V(-15%, +10%), 50/60Hz	
			3	AC200V(-15%, +10%), 50/60Hz	
	3	Relay contact (2a) AC 100V 2A DC 24V 2A	4	AC220V(-15%, +10%), 50/60Hz	
			5	DC24V(-15%, +10%)	
			0	other than those above	
Maximum frequency Open collector output: 40Hz Relay contact output: 1Hz Minimum pulse width: 20ms		Response time Open collector output: 3ms Relay contact output: 10ms		Consumption VA: AC power source:2.5VA DC power source:1.5W	Weight: AC power source:500g DC power source:400g

Connection diagram



At the time of Tr. open collector output

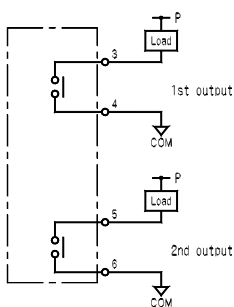


About output pulse



Load operates when internal transistor Q is ON.
Maximum switching capacity of internal transistor Q is DC24V, 100mA.
Do not apply a reverse polarity voltage.

At the time of relay contact output



About output pulse

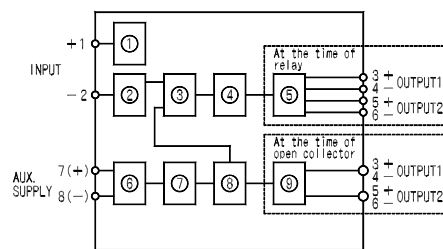


Load operates when contact is ON.

Relay capacity: AC 100V, 2A
DC 24V, 2
Mechanical life: 50,000,000 times
Electrical life: 100, 000 times (Rated load)

Block diagram

Input terminal open voltage 24V
Input terminal shot current 5mA



- Constant current circuit
- Comparator
- Relay
- Power source circuit
- Photo coupler
- Voltage converter
- Switching circuit
- Current insulating circuit
- Reference voltage circuit

Purchase specifications

Item to specify

PPTP2 -

Output Auxiliary power